

MAX MÜLLER

PROCESS ILLUMINATION
AND OBSERVATION



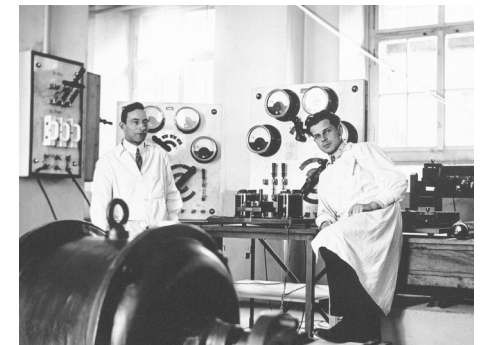
MAX MÜLLER

SWISS EXCELLENCE
SINCE 1936

“**SWISS EXCELLENCE**” is not just a slogan. It’s a promise to our clients. It means that all our products are engineered and manufactured according to the highest quality standards. Therefore, our products will never let you down.



“**SINCE 1936**” stands for our heritage. Our story has started in the garage of our grandmother’s home in Basel. Founded more than eighty years ago, MAX MÜLLER has grown into one of the world’s leading manufacturers in its field.





LIGHT FITTINGS

Our range includes aluminum and stainless steel light fittings, for both [Ex] and non-[Ex] applications.

With an output from 100 to 2,300 lumens as well as with a variety of operating modes (such as push-buttons, timers, etc.) and supply voltages, we cover any requirement.

We are proud that all our light fittings are 100% made in Switzerland. This is our heritage, guaranteeing absolute reliability.

We offer a complete range of ...

- ___ [Ex] light fittings
- ___ Non-[Ex] light fittings
- ___ [Ex] timers
- ___ Non-[Ex] timers



CAMERA SYSTEMS

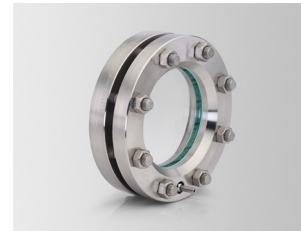
Our range includes stainless steel camera systems, for both [Ex] and non-[Ex] applications.

With digital network cameras (PoE), both regular-sized and miniaturized, and with countless features (such as motion sensors, etc.), we cover any requirement.

Our cameras are entirely engineered and manufactured in Germany. They are made to the highest quality standards and use the most advanced technology.

We offer a complete range of ...

- ___ [Ex] cameras
- ___ Non-[Ex] cameras



SIGHT GLASSES (VETROLUX®)

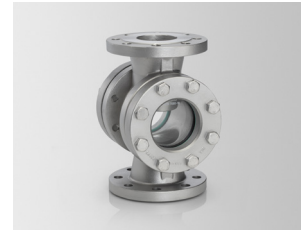
Our range includes steel and stainless steel sight glasses, with a variety of flange, glass, and gasket materials.

We provide sight glasses according to different standards (DIN 28120, DIN 28121, and DIN 11851) and in different shapes (circular, elongated, screwed, hinged, metal-fused, etc.) as well as a wide range of flow indicators.

In order to ensure the highest quality and full traceability, we only use components that are made in Europe.

We offer a complete range of ...

- ___ Circular sight glasses
- ___ Obround and rectangular sight glasses
- ___ Screwed sight glasses
- ___ Hinged sight glasses
- ___ Metal-fused sight glasses
- ___ Flow indicators



ACCESSORIES FOR SIGHT GLASSES

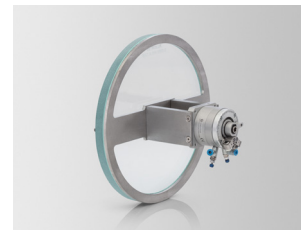
Our range includes process observation accessories such as wipers, spraying devices, and premium glass plates.

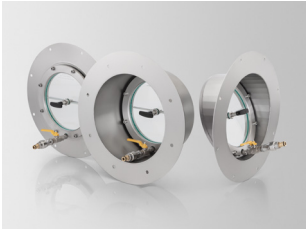
We provide centrally and sideways operated wipers (manual and pneumatic) and glass plates according to DIN 7080, DIN 7081, and DIN 8902.

We only work with the world's most renowned glass makers. Therefore, all our glass plates are 100% made in Germany (out of German raw material).

We offer a complete range of ...

- ___ Wipers and motorized wipers
- ___ Spraying devices
- ___ Glass plates





INDUSTRY-SPECIFIC SOLUTIONS

Our range includes equipment that is designed for specific industries and their requirements.

MAX MÜLLER has been a pioneer of the biogas industry, offering integrated biogas solutions, such as sight glasses with automated wipers, light fittings, and camera systems.



Furthermore, we offer light fittings and sight glasses that are specifically designed for aseptic/ sterile applications.

We offer a complete range of ...

- ___ Biogas solutions
- ___ Sterile solutions (STERI-LINE®)



CUSTOMIZED SOLUTIONS

Do you need a non-standard glass plate? A stepped glass plate? A radiused flange?

We can offer glass plates in various materials (including quartz) and any dimensions, glass plates to JIS, Macrolon® discs according to your specifications, and gaskets in rare materials and non-standard shapes.



Moreover, our engineering team is looking forward to developing sight glass solutions according to your needs.

We offer a complete range of ...

- ___ Custom-made glass plates
- ___ Custom-made gaskets
- ___ Custom-made sight glasses (i.e., flanges)

SOLUTIONS

MAX MÜLLER is a family-owned manufacturer of high-quality process observation equipment.

Based in Switzerland, we develop and manufacture process illumination and observation solutions, such as light fittings, sight glasses (including accessories such as wipers, etc.), and camera systems.

CLIENTS

We serve clients in the chemical, pharmaceutical, and food industries as well as in the environmental and utilities sectors, and wherever safe and reliable observation equipment is needed.

Our worldwide clientele includes end users, equipment manufacturers, resellers, and others.

CONNECT

Our headquarters are in Switzerland, and we have subsidiaries in Germany and in the United Kingdom. Furthermore, we have a global network of resellers. Please find your contact here:

www.maxmuller.com
info@maxmuller.com
+41 61 487 92 92



COPYRIGHT

All rights reserved. No part of this brochure may be reproduced, distributed or transmitted in any manner without the expressed written consent of MAX MÜLLER. Subject to change.

© MAX MÜLLER

Document number: FB0101.EN
Document version: v24-10-20